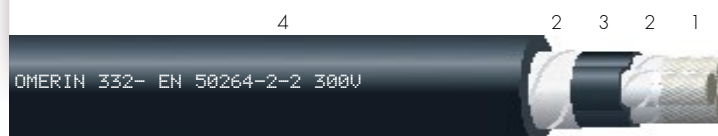


VARPREN® RW

EN 50264-2-2 300V MM

Sheathed cable

STANDARD POWER CABLES - EN 50264-2 / EN 50264-3



- 1 • Tin-plated copper core - class 5 - EN 60228.
- 2 • Separating tape (optional).
- 3 • Fire resistant elastomer - type EI 104 as per EN 50264-2-2.
- 4 • Fire resistant elastomer - type EM 104 as per EN 50264-2-2.

Characteristics

Thermal

Continuous operating temperature:
-40 °C to +90 °C.

Electrical

Operating voltage: 300 / 500 V.
Test voltage: 2 kV A.C.

Mechanical

Cut-through resistance: ★★★★★
Resistance to abrasion: ★★★★★
Minimum static internal bending radius:
as per EN 50355 (Table 16)
and EN 50343 (Table 4)

Chemical

Acid and base resistance: ★★★★★
Mineral oil resistance: ★★★★★
Fuel resistance only for class M: ★★★★★

Fire-smoke

Halogen-free (EN 60754-1).
Low toxicity (EN 60754-2).
Low smoke (EN 61034-2).
Flame retardant (EN 60332-1-2, EN 60332-3-24).

Options

Other cross-sections or constructions on request.

Standards and approvals

- EN 60228, EN 50264-1, EN 50264-2-2.
- EN 60754-1, EN 60754-2.
- EN 60332-1-2, EN 60332-3-24, EN 61034-2.

Marking

OMERIN 332- EN 50264-2-2 300V - number of cores x < cross-section > MM - batch number - week/year

Item code	Nominal cross-section (mm ²)	Nominal insulation thickness (mm)	Nominal conductor diameter (mm)	Nominal sheath thickness (mm)	Cable outer diameter (mm)		Approx. linear weight (kg/km)
					Mini	Maxi	
374E0102	2 x 1	0.6	2.6	1.4	7.2	8.5	76
374E0202	4 x 1	0.6	2.6	1.4	8.2	9.6	113
374E0302	7 x 1	0.6	2.6	1.4	9.6	11.2	169
374E0402	9 x 1	0.6	2.6	1.4	11.5	13.4	213
374E0502	12 x 1	0.6	2.6	1.4	12.3	14.4	264
374E0602	19 x 1	0.6	2.6	1.4	14.5	16.6	383
374E0702	24 x 1	0.6	2.6	1.5	16.7	19.6	484
374E0802	32 x 1	0.6	2.6	1.6	18.5	21.7	626
374E0902	37 x 1	0.6	2.6	1.6	19.2	22.4	706
374E1002	40 x 1	0.6	2.6	1.6	19.9	23.3	757
374E1102	4 x 1.5	0.7	3.1	1.4	9.2	10.8	143
374E1202	7 x 1.5	0.7	3.1	1.4	10.9	12.8	212
374E1302	9 x 1.5	0.7	3.1	1.4	13.1	15.3	285
374E1402	12 x 1.5	0.7	3.1	1.4	14.0	16.4	357
374E1502	19 x 1.5	0.7	3.1	1.5	16.5	19.4	534
374E1602	24 x 1.5	0.7	3.1	1.6	19.5	22.8	675
374E1702	32 x 1.5	0.7	3.1	1.7	21.5	25.2	875
374E1802	37 x 1.5	0.7	3.1	1.7	22.4	26.2	990
374E1902	4 x 2.5	0.8	3.6	1.4	10.7	12.5	198
374E2002	7 x 2.5	0.8	3.6	1.4	12.7	14.9	305
374E2102	9 x 2.5	0.8	3.6	1.5	15.6	18.3	414
374E2202	12 x 2.5	0.8	3.6	1.5	16.7	19.6	524
374E2302	19 x 2.5	0.8	3.6	1.6	19.7	23.1	790
374E2402	24 x 2.5	0.8	3.6	1.8	23.5	27.5	1009

For this product, please contact :

OMERIN division principale

Zone Industrielle - F 63600 Ambert
Tel. +33 (0)4 73 82 50 00 - Fax +33 (0)4 73 82 50 10
omerin@omerin.com

OMERIN division silisol

BP 87 - ZI du Devey - F 42000 Saint-Etienne
Tel. +33 (0)4 77 81 36 00 - Fax +33 (0)4 77 81 37 00
silisol@omerin.com

www.omerin.com

omerin
LES CABLES DE L'EXTREME

The information provided in this technical data sheet is indicative and may be modified without prior notice, laying, wiring and electrical conditions and the environment of the cable can not be fully considered in our studies. In no way the company OMERIN shall be held responsible for any incidents in the case of inappropriate uses, particularly in the case of wiring conditions that do not respect the good practice and the standards in force. For an optimum use of the cables produced by our company, we recommend testing in real conditions. Our sales department is available for a possible provision of samples, and/or for the conditions of a complete study in our laboratories.
© Registered trademark of the OMERIN Group. Drawings and photos are not contractual. Reproduction is prohibited without the prior agreement of OMERIN.